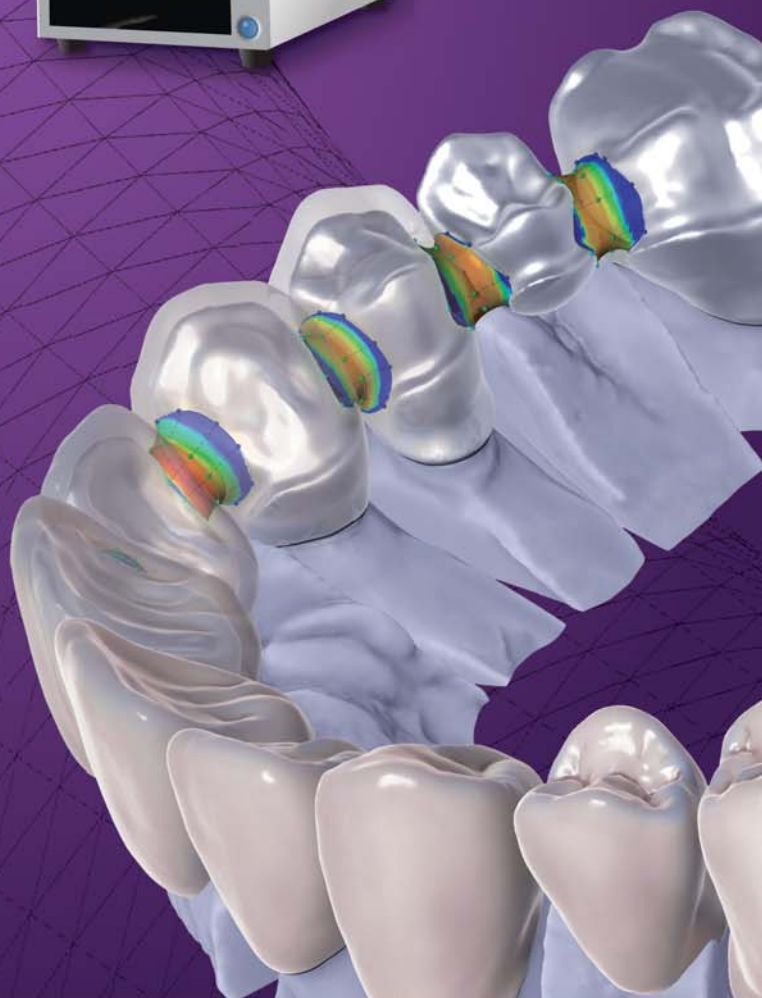




INTELLIGENCE



ORIGIN

Precision Digital Solutions - Driven By Innovation



ORIGIN[®] INTELLIGENCE

www.OriginCadCam.com
support@OriginCadCam.com

800-255-2839

2371 So. Presidents Dr., Ste. E & F
West Valley City, UT 84120

**Only \$7,500
\$174/MO**



B&D ORIGIN[®] INTELLIGENCE[™] Scanner & Design Software

\$21,000 Open Type
\$7,500 Closed Type, Limited Time Offer

Includes:

- New pre-configured computer, keyboard, & mouse.
- Multi die scanning capability.
- Impression scanning capability (requires purchase of impression holder - \$300).
- Custom implant abutment design software and library for major platforms.

Scan abutment Kit \$900.00

Includes all scan bodies that are compatible with the implant library.

NO LICENSE RENEWAL FEES!!

- Design software updates are optional.
- Minimum of 20 units per month required on closed scanner.*
(Implants count as two units, Wax/PMMA does not count toward minimum)

* Please reference Scanner Purchase Agreement for complete details.

Special Promotion

One month of unsintered Full Contour Zirconia at \$10 per unit with purchase of \$7,500 scanner (Maximum of 100 units apply to offer). A \$3,500 value!

Additional Savings!

Save even more when you buy a DuoTron Pro Fast Sintering Oven with your ORIGIN Intelligence[™] Scanner For a Combined Price of**

Only \$19,900.

Total savings of \$8,000!



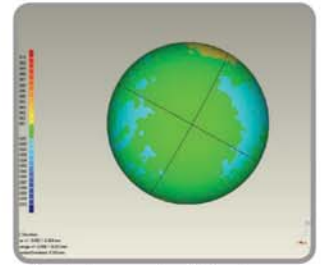
** Closed Type Only

ORIGIN Intelligence Scanner Features

Standard of excellence in 3D dental scanning

1. TWIN-CAMERA TECHNOLOGY

The ORIGIN® Intelligence™ boasts a function for obtaining a single set of data with two cameras. Therefore, precision of the data obtained by the ORIGIN® Intelligence™ is highly superior when compared with other scanners which obtain data with a single camera.



Precision under 10 microns

2. WHITE LIGHT SCANNING

The white light scanning technology allows the user to obtain data that are much clearer than the conventional laser type. This feature realizes clearer (noise-free) 3D data.



Clearer white light projection

3. DEEP SCANNING

The ORIGIN® Intelligence™ has a narrow angle between two cameras, therefore it can ensure securing line of sight for complicated models such as impressions.

4. SHARP MARGIN LINE

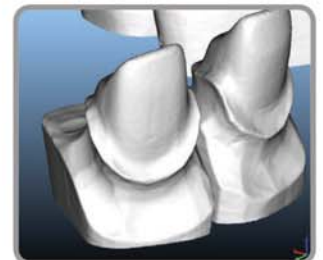
The ORIGIN® Intelligence™ employs high-resolution cameras, and is designed for the optimal measurement of sharp margin lines.

5. VARIANT SCANNING SIZE

As for small models such as inlays, onlays and implants, it is possible to select the most appropriate scanning areas for the models.

6. COMPACT SIZE

With dimensions of 212mm X 340mm X 449mm, the ORIGIN® Intelligence™ is the most ideal scanner for use in labs with limited space.



Sharpness of margin line

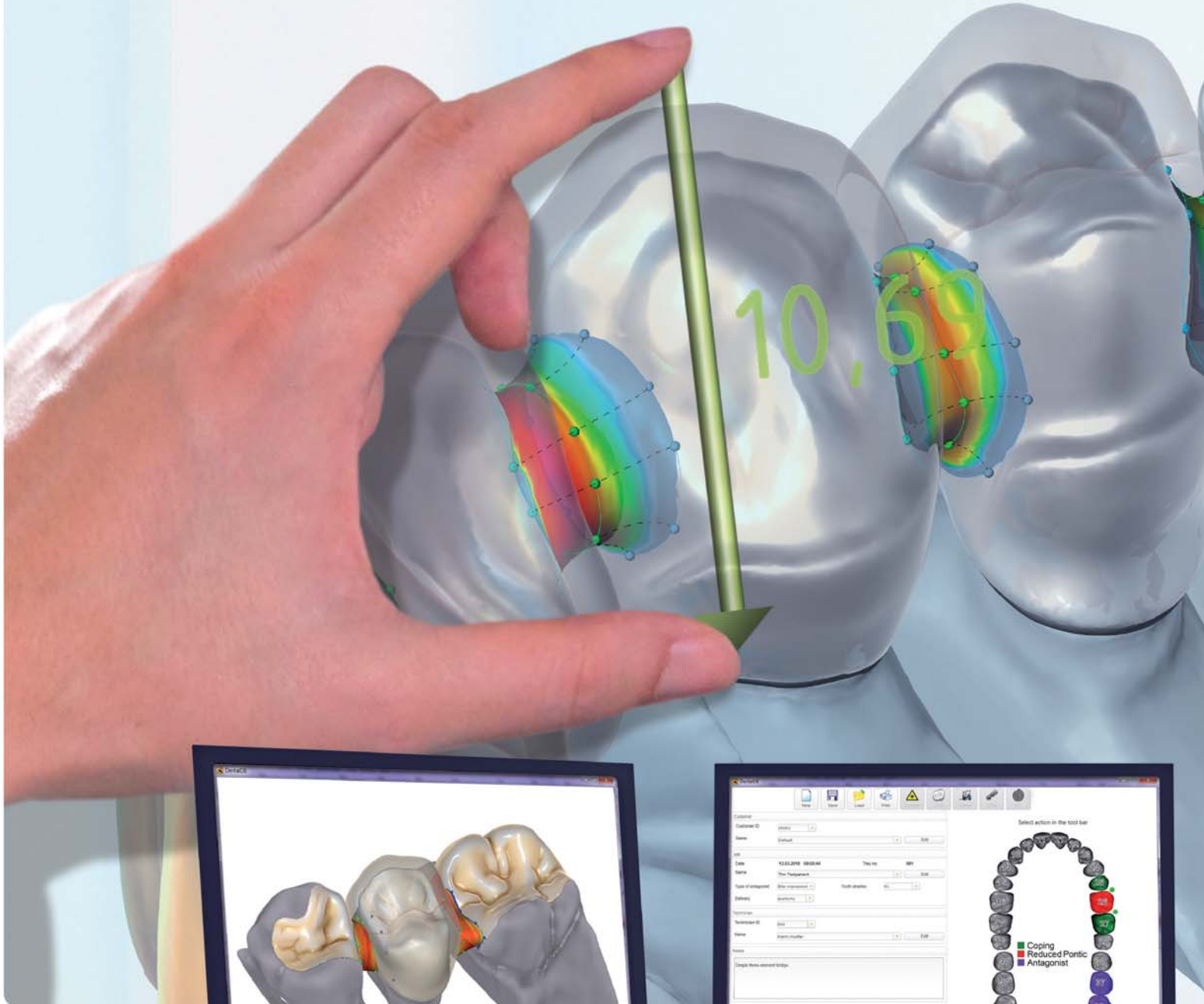
Specifications

SIZE (W X H X D)	212mm X 340mm X 449mm
WEIGHT	12.5 kg
SCANNING AREA AND POINT SPACING	DS2-16L : 80mmX69mmX65mm (0.06mm) DS2-25L : 40mmX35mmX32mm (0.03mm) DS2-35L : 30mmX25mmX22mm (0.02mm)
CAMERA RESOLUTION	1.4 mega pixels
ACCURACY	± 0.01 mm
SCANNING TIME	Single tooth : 1~2 minutes Full arch : 3~4 minutes
ROTARY STAGE	2-axis movement (swing and rotation)
LIGHT SOURCE	LED (30,000 hours)
INTERFACE	USB 2.0

ORIGIN[®] Intelligence[™]

Setting new standards in usability and productivity

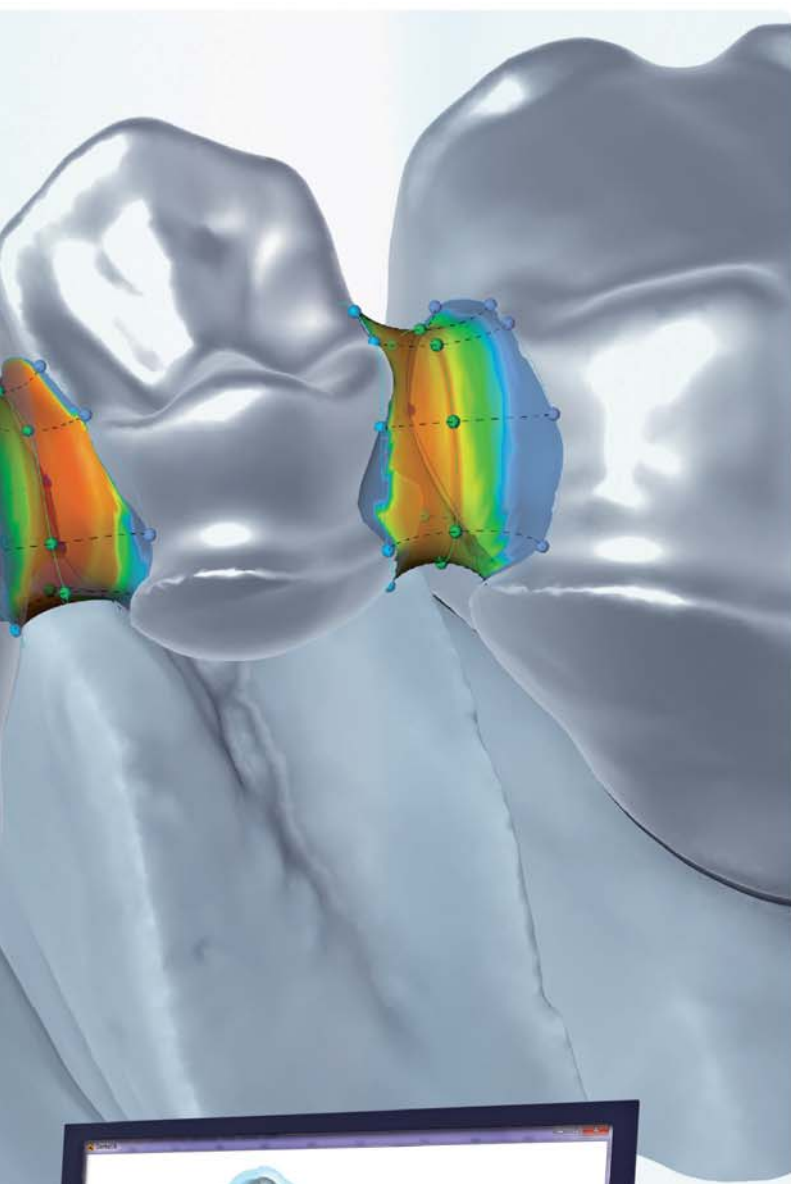
Bridge framework



Inlay bridge



Database & Work flow management



THE COMPLETE DENTAL CAD SOLUTION

ORIGIN® Intelligence™ is an advanced CAD system for dental applications. From work flow management to CAD construction and preparation of production, ORIGIN® Intelligence™ provides an integrated solution for dental technicians.

FAST AND EASY TO USE

The ORIGIN® Intelligence™ platform is known for its speedy operation and ease of use - helping you minimize training costs and maximize productivity. It is reliable and robust even when dealing with complex cases on a daily basis.

WIDE RANGE OF INDICATIONS

Already in its base version, the ORIGIN software covers a wide variety of indications, making it an attractive choice both for expert users and newcomers in the Intelligence field:

- » Anatomic crowns
- » Anatomic copings
- » Bridge frameworks
- » Inlays
- » Onlays
- » Veneers
- » Offset copings
- » Waxup digital copy milling

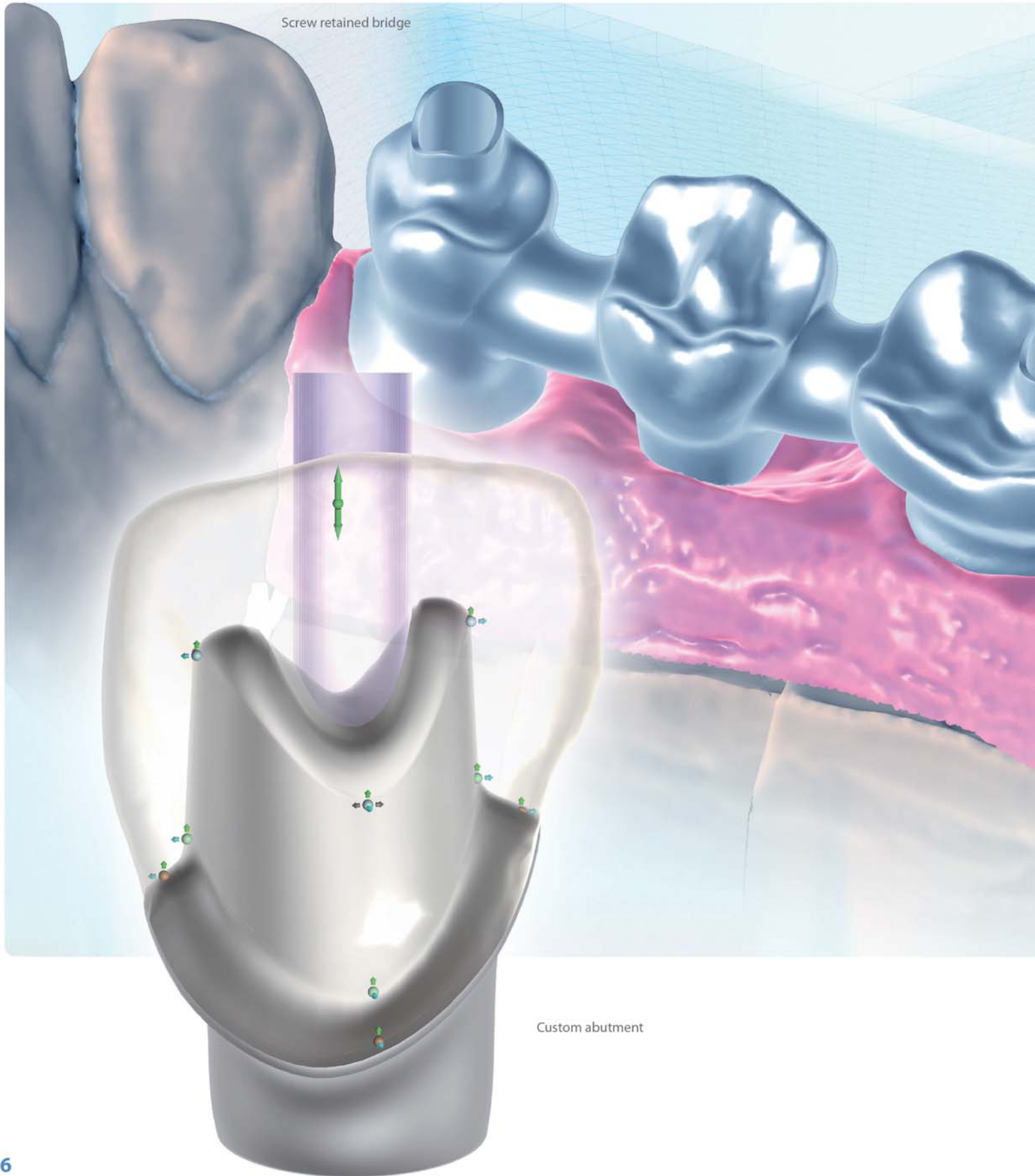


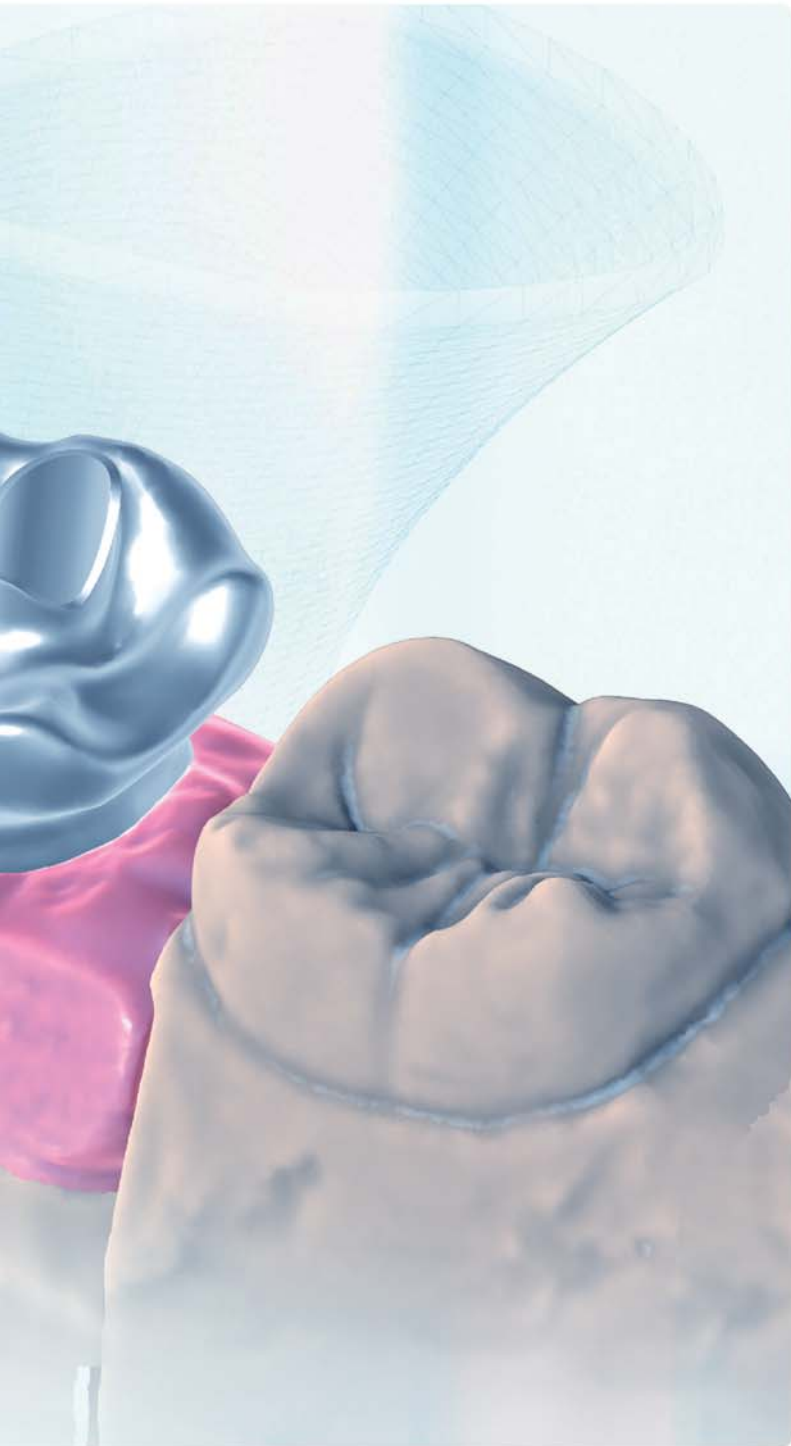
Digital copy milling with cut-back



The Implant Module

An ORIGIN® Intelligence™ DentalCAD module for the design of abutments and screw-retained bridges





IMPLANT MODULE

The ORIGIN® Intelligence™ Implant Module comes standard with the DentalCAD platform. With this module, custom abutments and screw-retained bridges can be designed.

IMPLANT LIBRARIES ALREADY INCLUDED

Intelligence™ ships with several implant libraries. This includes the ORIGIN® library, which provides support for a variety of implant systems using ORIGIN®'s titanium bases for milling one-part abutments or screw retained bridges.

CUSTOM ABUTMENT DESIGN

With the ORIGIN® Intelligence™ implant module, the construction of custom abutments is easy and straight-forward.

HIGH PRODUCTIVITY & PROCESS RELIABILITY

Custom abutments and suprastructures can be designed together in a single CAD session. Since milling parameters for both abutment and suprastructure are correctly considered during the design phase, optimal fitting is possible when producing all parts in one go – without the intermediate step of rescanning the produced abutment in order to design the suprastructure.

When designing bridges on custom abutments, the software will ensure that all abutments holding the bridge will have the same insertion axis.

SCREW RETAINED BRIDGES

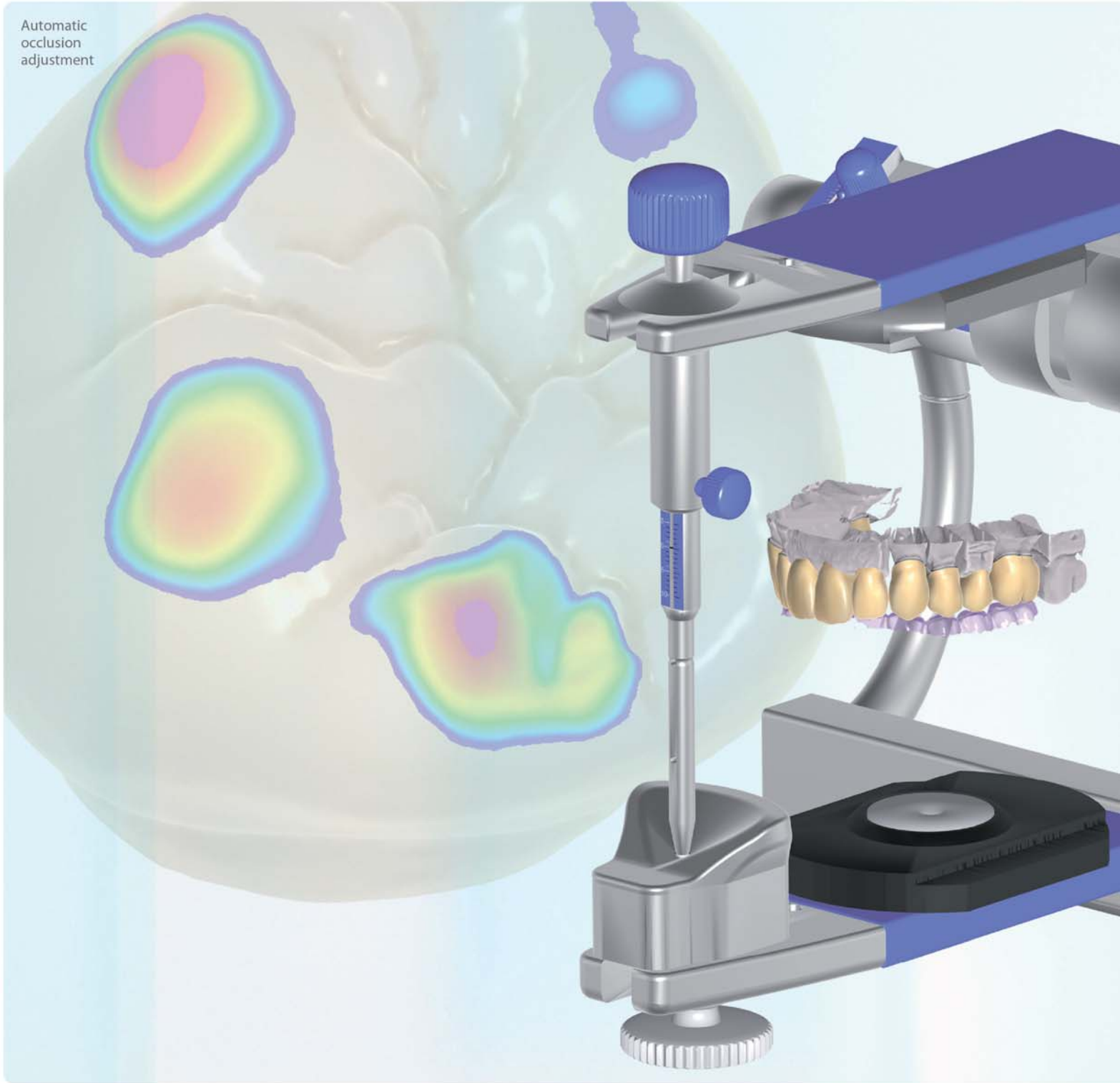
With the ORIGIN® Intelligence™ implant module, the design of screw retained bridges, crowns, and copings becomes an easy task. Take advantage of our advanced screw channel design, to simplify subsequent ceramic coating and minimize risk of chipping.



The Virtual Articulator Module

An ORIGIN® Intelligence™ add-on for considering dynamic occlusion

Automatic
occlusion
adjustment





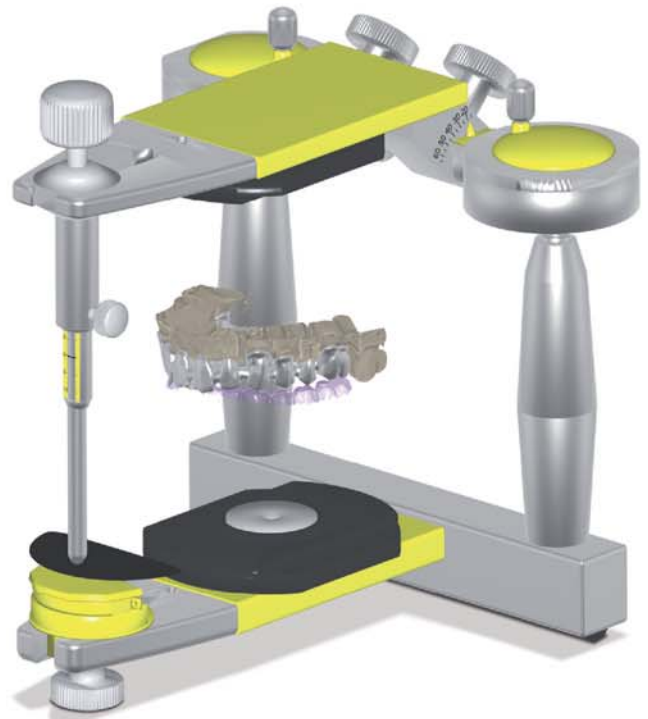
Different articulator types available

VIRTUAL ARTICULATOR MODULE

The ORIGIN® Intelligence™ Virtual Articulator is an add-on for Intelligence's DentalCAD, which allows users to consider dynamic occlusion when designing crowns and bridges.

The positioning of the stone models within the physical articulator can be precisely transferred into the software for perfect patient-specific results.

Parameters such as condylar angle, Bennett angle grid, and immediate side shift, can be adjusted just like on a physical articulator.

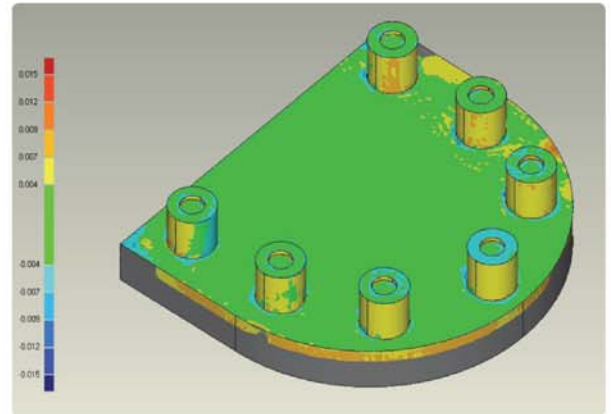
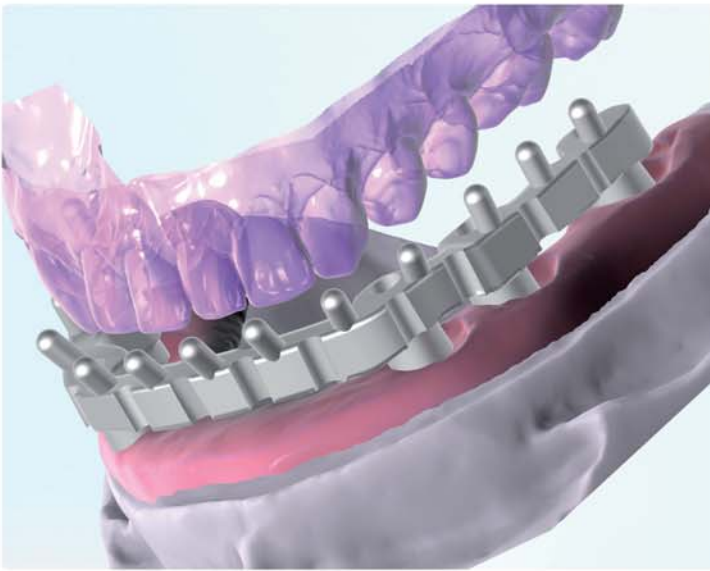


The Bar Module

An ORIGIN® Intelligence™ add-on for advanced dental bar design

Intelligence's new bar module allows both fast and easy realization of standard dental bars, as well as advanced custom bar design. Attachments or retentions can be added to the design; cylindrical holes - or even arbitrary geometries - can be cut out, in order to bolt or glue ready-made spherical attachments onto the bar.

Thanks to its elaborate design options, Intelligence's bar module allows you to design dental bars that deal gracefully with complex clinical situations, and provide maximum comfort for patients.



High Accuracy Scanning

SUPPORTS IMPLANT BAR DESIGN

The high precision of the ORIGIN® Intelligence™ scanning module provides data that has accuracy **under 10 microns**.



Titanium Implant Abutments*
*Milling Time under 15 min, Method Patent Pending



**Zirconia
Implant Bridge**



**Titanium, Co-Cr
Implant Bridge**

Integrated DICOM Viewer

Visualization of voxel data from CT machines during the design process

The ORIGIN® Intelligence™ DentalCad platform includes an integrated DICOM viewer that allows you to visualize voxel data from CT machines, during the design of dental restorations. Thanks to its integrated HTTP server, ORIGIN's software enables on-line exchange of implant and tooth position data with third-party programs, such as implant planning software. The DICOM viewer functionality is available as an add-on module and requires a graphics card with at least 1.5 GB of video memory.

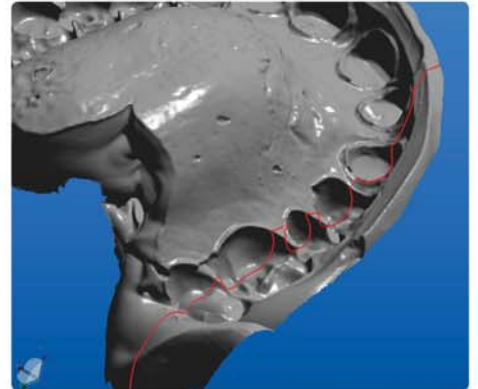
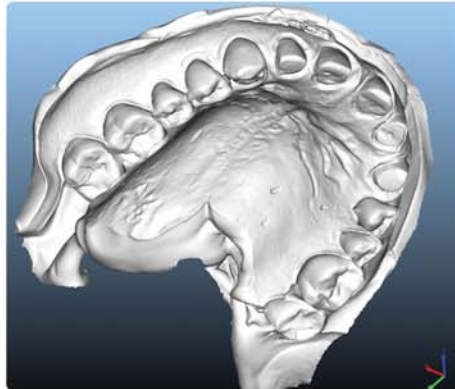




INTELLIGENCE

Impression scanning

The narrow angle between two cameras allows capturing of minute details of complicated models such as dental impressions.



TruSmile
TECHNOLOGY

TruSmile Technology

Realistic rendering of dental restorations in real-time

The ORIGIN® Intelligence™ TruSmile technology provides nearly photo-realistic renderings of dental restorations - in real time, already during the design process, to providing a "What You See is What You Get" user experience.

Rendering presets are available for common materials such as ceramic, NP metal, or zirconia; in addition, it can customize render effects to match the visualization of the materials offered. TruSmile is available as an add-on module, and requires at least a mid-range 3D card (nVidia GeForce GTX 460 or faster).



ORIGIN®

Precision Digital Solutions - Driven By Innovation



Flexibility - Above and Beyond Zirconia. Ceramics, Metal and More!



Custom Implant Abutments
Hybrid and Titanium*

*FDA Cleared / Pending

Ceramics
IPS e.max and **VITA**
© e.max is a trademark of Ivoclar Vivadent
© Vident - A VITA Company

Zirconia
Full Contour and
Substructures



Titanium Implant Abutments**

**Milling Time under 15 min,
Method Patent Pending

Zirconia
Implant Bridge

Titanium, Co-Cr
Implant Bridge

NOBLE TITAN

Chrome Cobalt

Ceramics

PMMA

Zirconia



Most Versatile & Cost Efficient Production



www.OriginCadCam.com
support@OriginCadCam.com

800-255-2839

2371 South Presidents Dr., Ste E
West Valley City, UT 84120

B&D DENTAL
TECHNOLOGIES