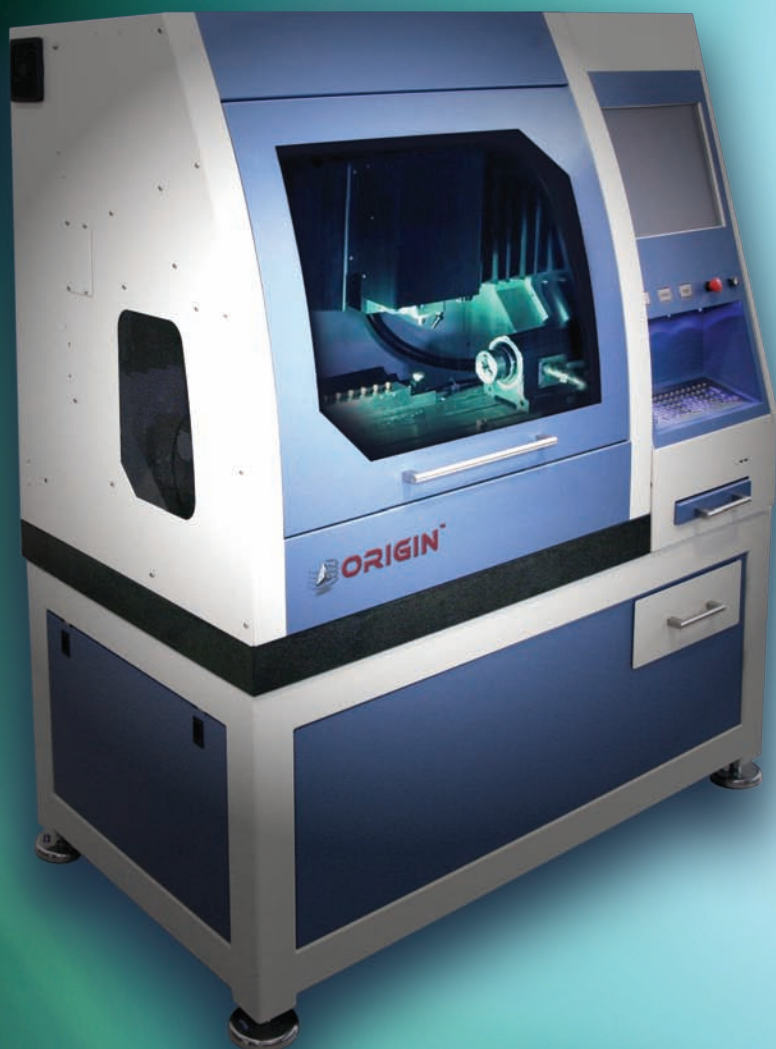




# ORIGIN™

Premium OPEN Source Dental CAD/CAM Systems  
at Competitive "OPEN MARKET" Prices



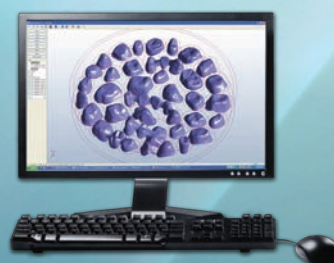
98mm disc, 47 actual copings (11 minute per coping average mill time)



ORIGIN 3Shape Scanner



ORIGIN 3Shape Design Software



ORIGIN Advanced CAM Software



ORIGIN Programmable Sintering Oven

## Comprehensive System Evaluation and Training

Call us to schedule hands-on training at our facility in Salt Lake City, Utah. Bring your own cases to scan, design, mill and sinter. Spend as much time as you need to thoroughly evaluate and test the Origin CAD/CAM system, we will cover your meals and hotel nights.

In addition, come learn about the Origin system in Chicago! Visit B&D Dental in the exhibit area and plan on attending the Origin clinic at the Sheraton hotel on Saturday February 28th from 7:30-9:30am (earn 2 hours worth of Scientific credits). Please call B&D Dental to guarantee your free admission space.

## Best of Class Components

Each stand-alone ORIGIN component (scanner, milling machine, sintering furnace, YZ zirconia & software) is among the best in its field. Each components has a proven track record of performance and dependability, allowing you to trust that your system will provide the exacting results that you demand.

## Consulting on OPEN CAD/CAM Integration and Component Options

**Call B&D Dental Today to Learn More About the Origin System**

1-800-255-2839

Salt Lake City, UT



**B&D DENTAL**