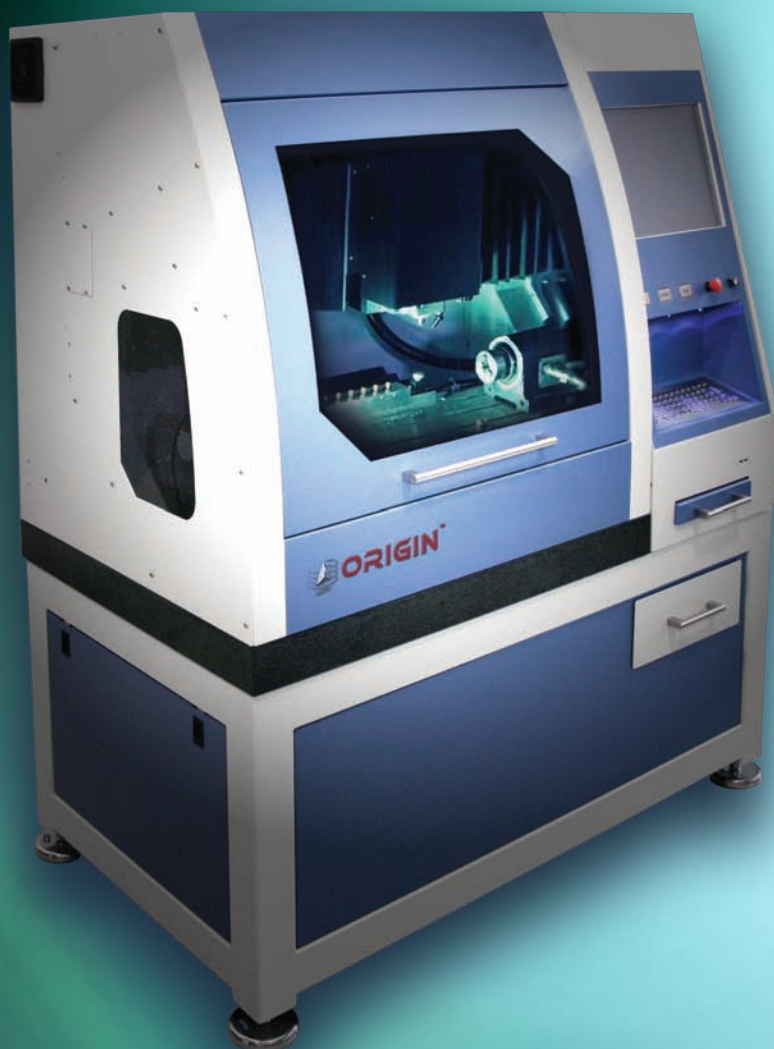




ORIGIN™

Premium OPEN Source Dental CAD/CAM Systems
at Competitive "OPEN MARKET" Prices



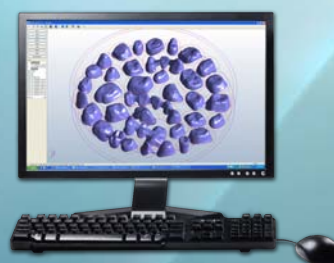
98mm disc, 47 actual copings (11 minute per coping average mill time)



ORIGIN 3Shape Scanner



ORIGIN 3Shape Design Software



ORIGIN Advanced CAM Software



ORIGIN Programmable Sintering Oven

Comprehensive System Evaluation and Training

Call us to schedule a system demonstration and receive hands-on training at our facility in Salt Lake City, Utah. Bring your own cases to scan, design, mill and sinter. Spend as much time as you need to thoroughly evaluate and test the Origin CAD/CAM system, we will cover your meals and hotel stay.

In addition, come learn about the Origin system in Chicago! Visit B&D Dental for a personal demonstration in the Ontario meeting room of the Sheraton Hotel, Wednesday the 25th through Friday the 27th (the 3 days before the LMT Lab Day show in February). Also stop by our exhibit area and plan on attending the Origin clinic at the Sheraton hotel on Saturday February 28th from 7:30-9:30am (earn 2 Scientific credit hours). Please call B&D Dental to set-up a demonstration time before the lab show and to guarantee your free admission space for the Saturday morning clinic.

Best of Class Components

Each stand-alone ORIGIN component (scanner, milling machine, sintering furnace, YZ zirconia & software) is among the best in its field. Each component has a proven track record of performance and dependability, allowing you to trust that your system will provide the exacting results that you demand.

Consulting on OPEN CAD/CAM Integration and Component Options

Call B&D Dental Today to Learn More About the Origin System

1-800-255-2839

Salt Lake City, UT



B&D DENTAL